

SOUTH AERIAL VIEW - PHASE II



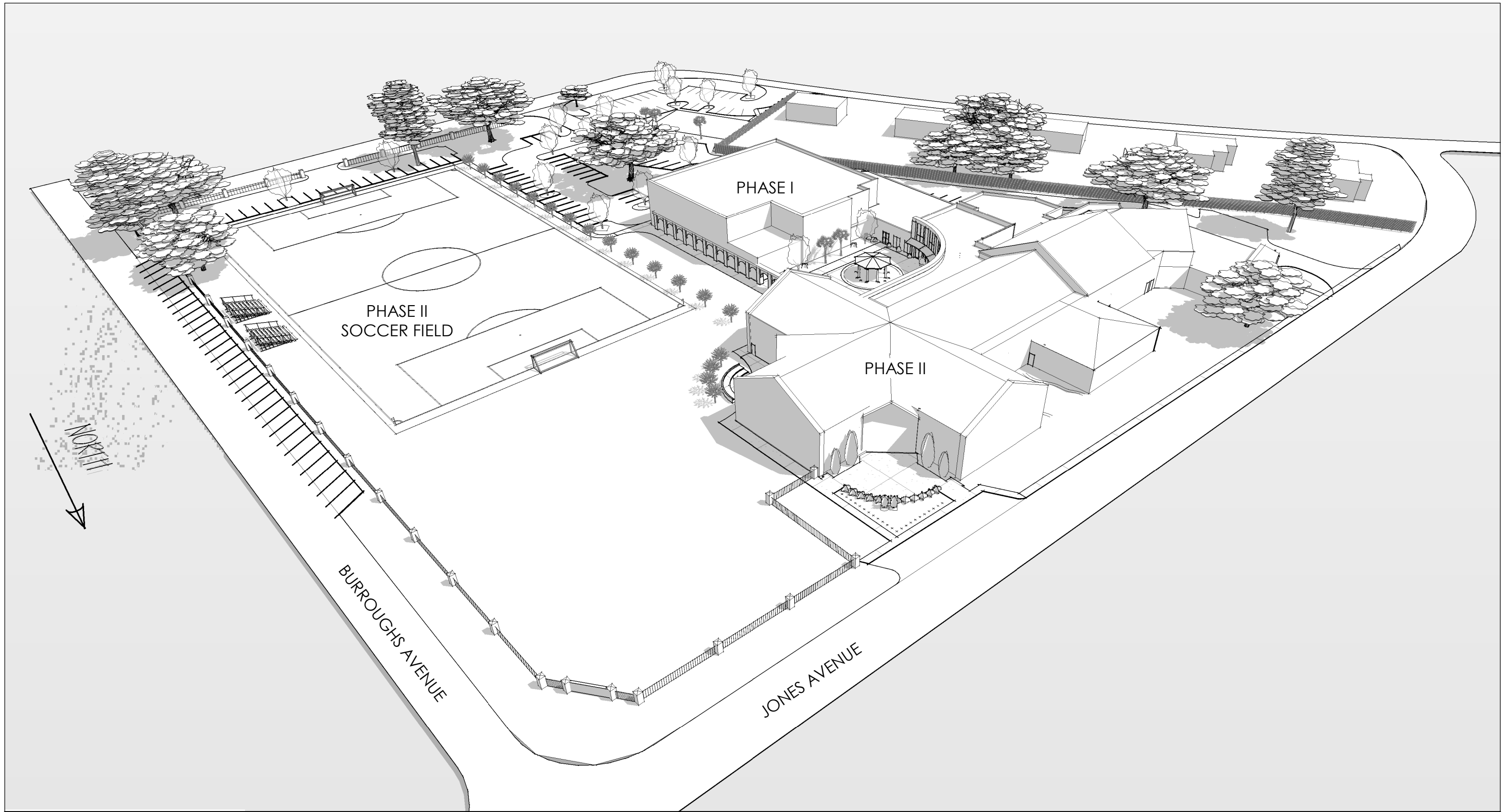
HOLY TRINITY
 CLASSICAL CHRISTIAN SCHOOL

2019.08

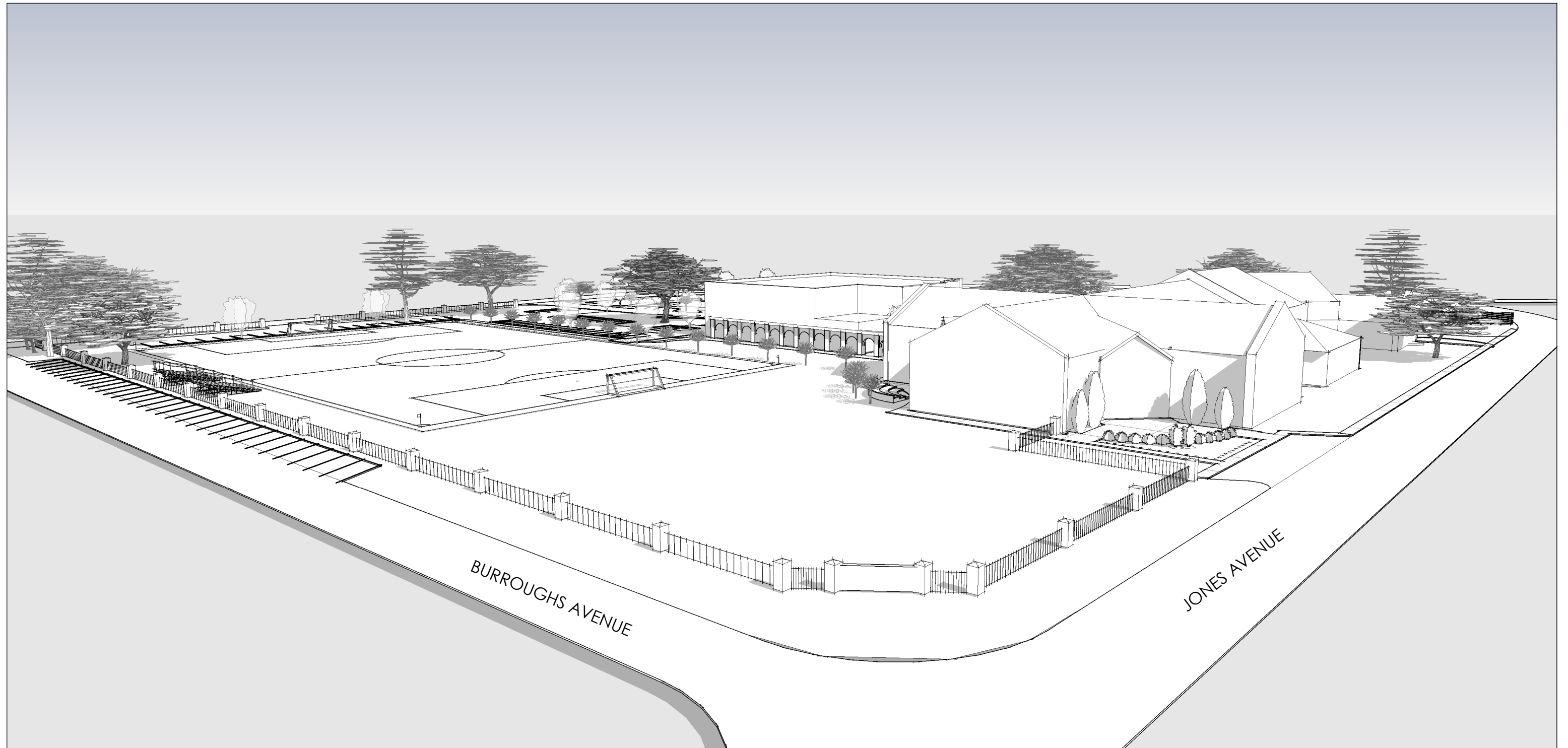
8/11/2021



SD102

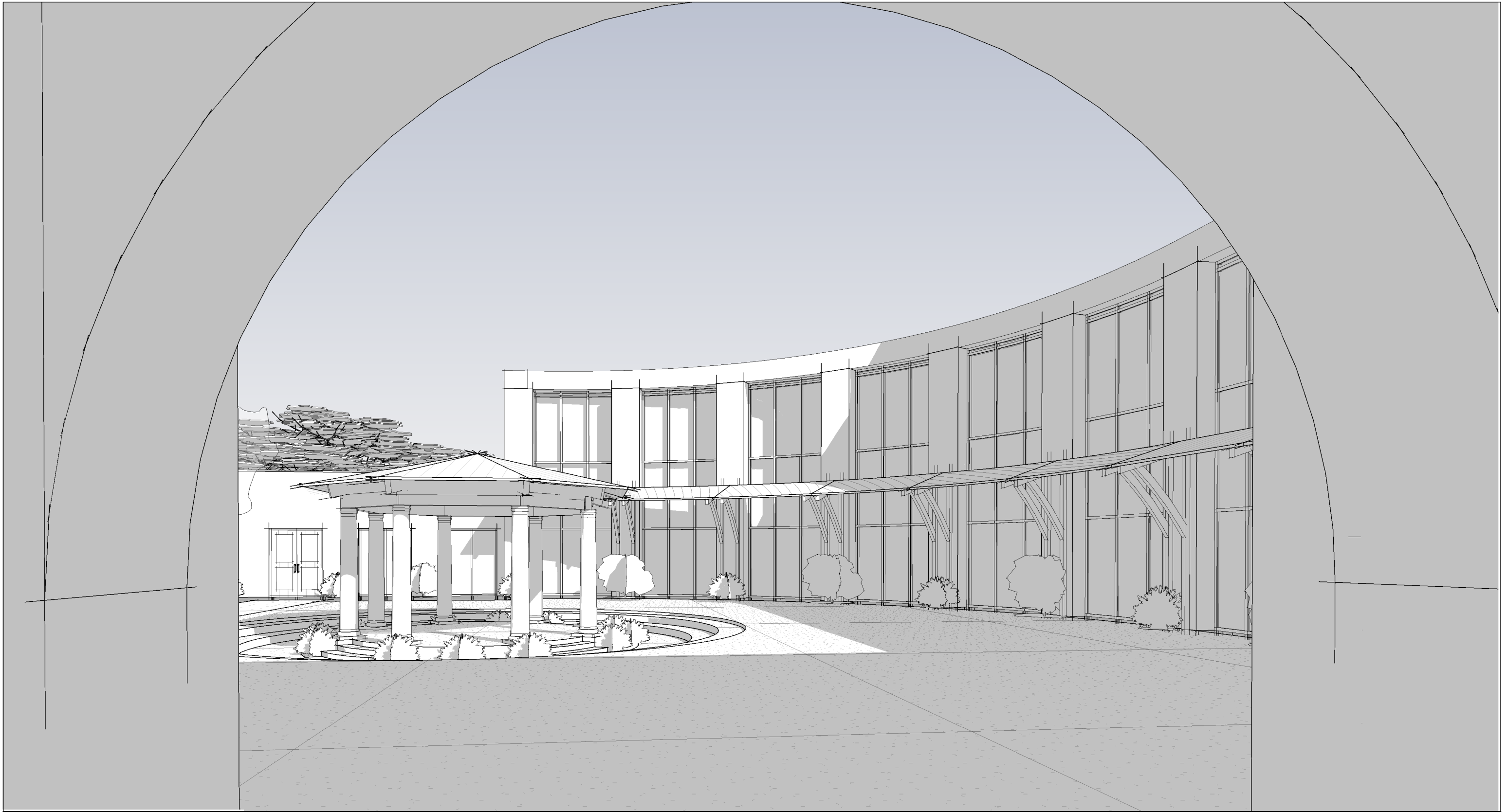
8/12/2021 8:43:15 AM





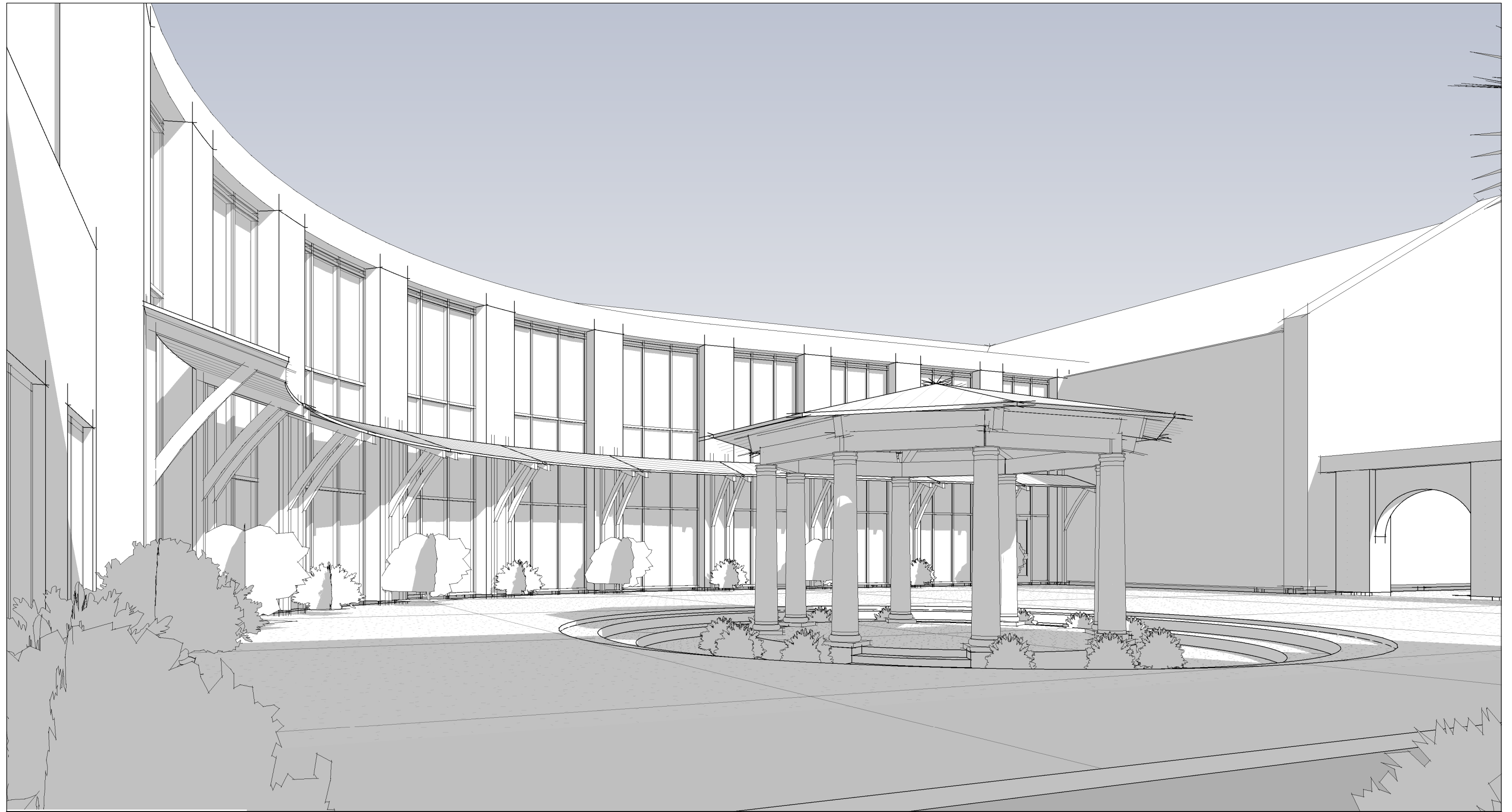
 BEAUFORT - SAVANNAH 23A Market, Suite 1 - Beaufort, SC - www.A101.Design	NORTHEAST AERIAL VIEW - PHASE II		2019.08
			8/11/2021
	 HOLY TRINITY CLASSICAL CHRISTIAN SCHOOL		SD103





 <p>BEAUFORT - SAVANNAH 23A Market, Suite 1 - Beaufort, SC - www.A101.Design</p>	<p>FRONT VIEW - PHASE II</p>	<p>2019.08</p>
		<p>8/11/2021</p>
		<p>SD104</p>



 <p>BEAUFORT - SAVANNAH 23A Market, Suite 1 - Beaufort, SC - www.A101.Design</p>	Courtyard View From Chapel		2019.08
			8/11/2021
	 <p>HOLY TRINITY CLASSICAL CHRISTIAN SCHOOL</p>		SD105





 <p>A101 ARCHITECTURE BEAUFORT - SAVANNAH 23A Market, Suite 1 - Beaufort, SC - www.A101.Design</p>	<p>Courtyard View From Fellowship Hall</p>	<p>2019.08</p>
		<p>8/11/2021</p>
	<p> HOLY TRINITY CLASSICAL CHRISTIAN SCHOOL</p>	<p>SD107</p>